

## specifications

STRUCTURE	Generally reinforced concrete frame
WALL	Generally brickwall
CEILING	Generally skim coat to the underside of floor slab Top most floors – asbestos-free ceiling – skim coat to the underside of floor slab
WINDOWS	Generally aluminium framed windows
DOORS	Entrance door – glass panel and door Plywood flush door Roller shutter Toilet – timber or pvc flush door
LOCKS	Lockset
WALL FINISHES	Generally acrylic based paint to external wall Emulsion paint to internal wall Toilet – wall tiles to 1500mm high
FLOORING	Generally cement render Floor tile to reception area Toilet – floor tiles
<b>SANITARY INSTALLATION</b>	
Water closet	3 nos
Squatting	2 nos
Wash hand basin	3 nos
Sink	2 nos
<b>ELECTRICAL INSTALLATION</b>	
Lighting point	27 nos
Power point	24 nos

The information contained in this brochure is subject to change and cannot form part of an offer or contract. All renderings are artist's impressions only and all measurements are approximate. While every reasonable care has been taken in preparing this brochure, the developer cannot be held responsible for any inaccuracies.

## 2 1/2 Storey Detached Showroom cum Warehouse 2 1/2 層獨立陳列室兼倉庫



TYPE  
**B** RILLIANT

# 市中心的商業中心

具備互聯網及閉路電視

Another signature development of



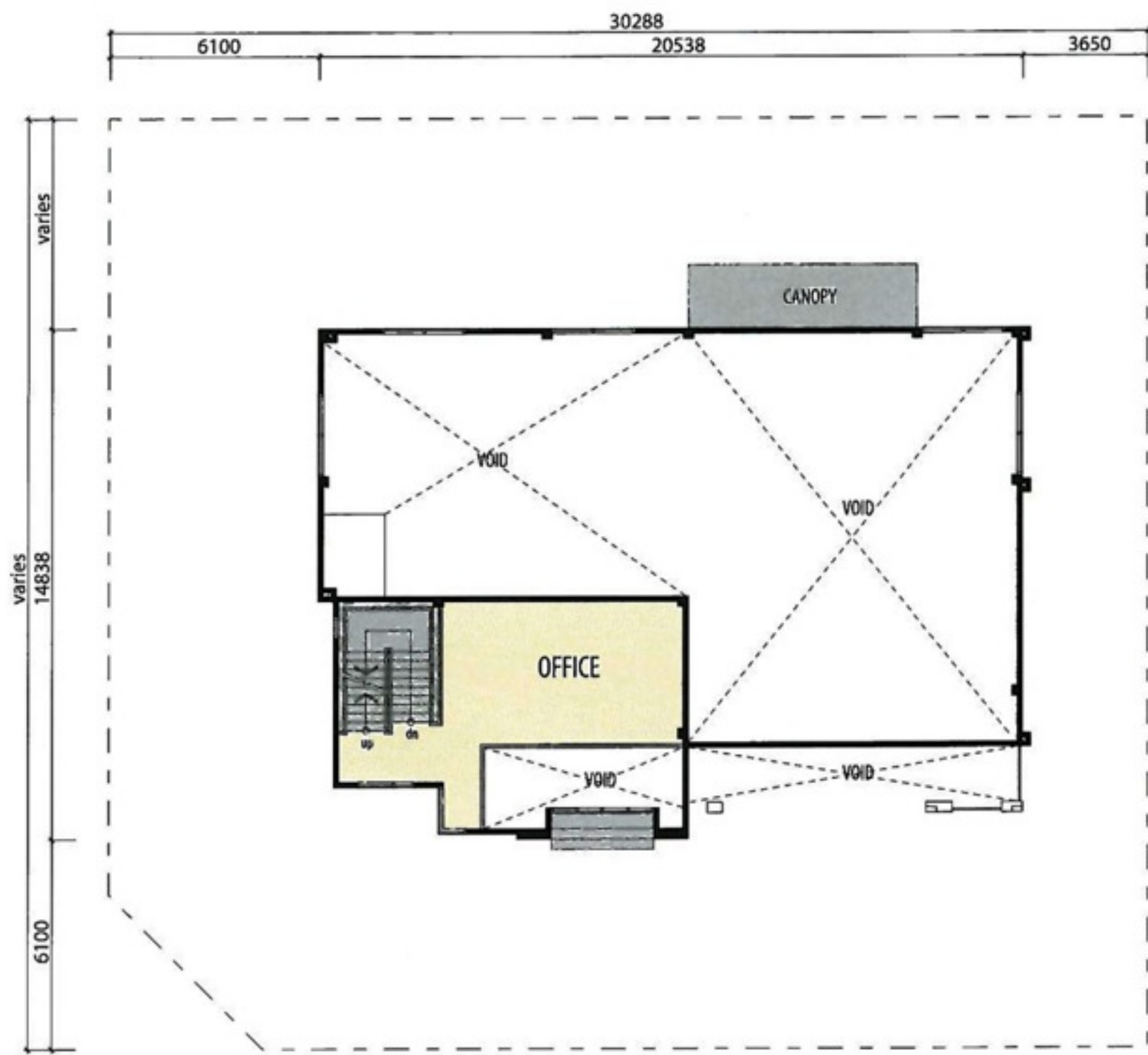
Developer: Purcon Resources Sdn Bhd (387153-X)

Sales Enquiries: 089-888 911/886 911/882 911/880 911  
012-2950 083/019-8835 969/012-3576 715/017-3978 667

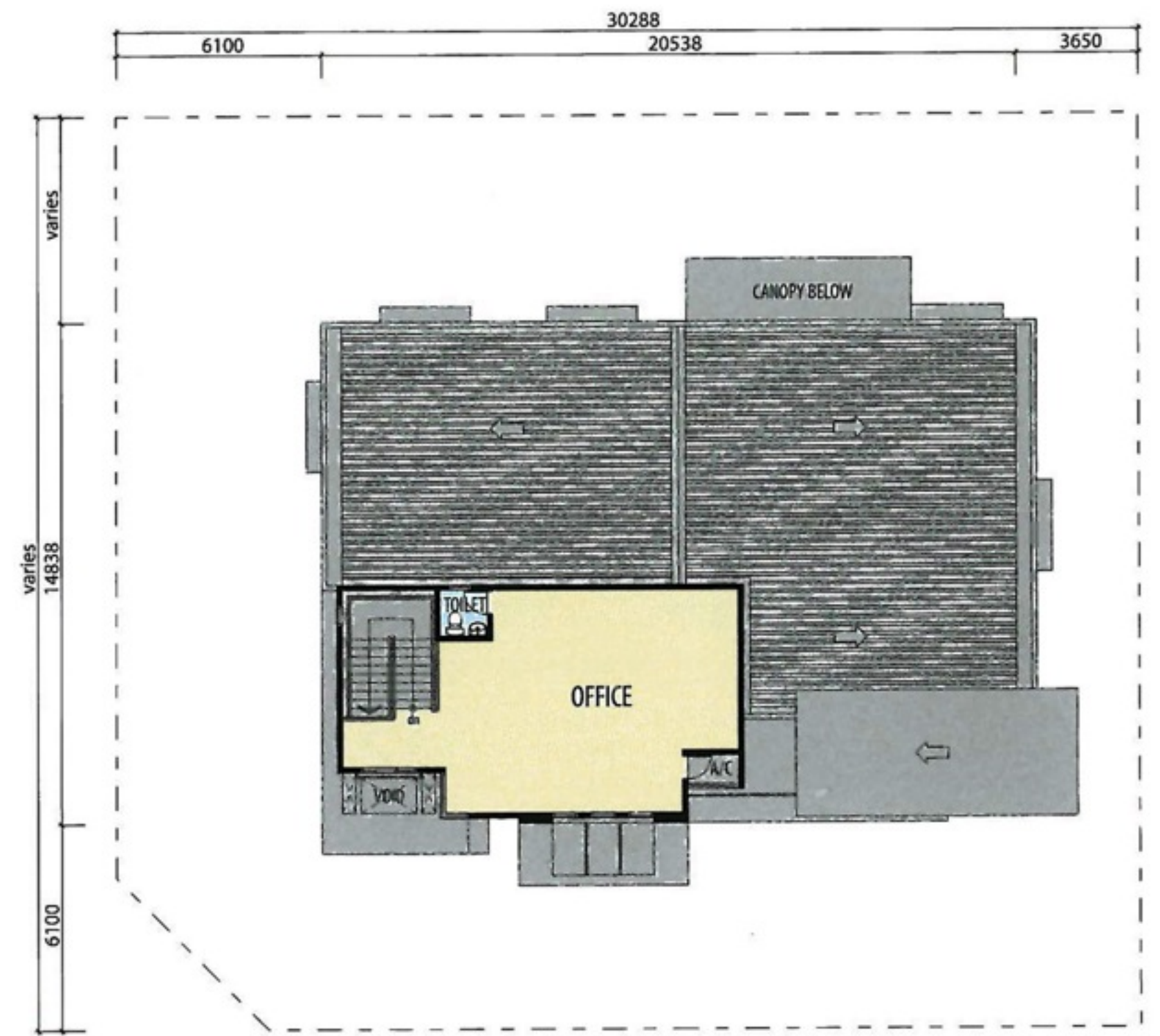
Sales Office: MDLD 0763, Ground Floor, Block C, Ming Huat Light Industries, Dam Road, 91100 Lahad Datu, Sabah. Fax: 089-886 921

Headquarters: Wisma Purcon B1-03-13, Jalan SR 1/9, Taman Serdang Jaya, Section 9, 43300 Seri Kembangan, Selangor Darul Ehsan.  
Fax: 03-8941 2460/61

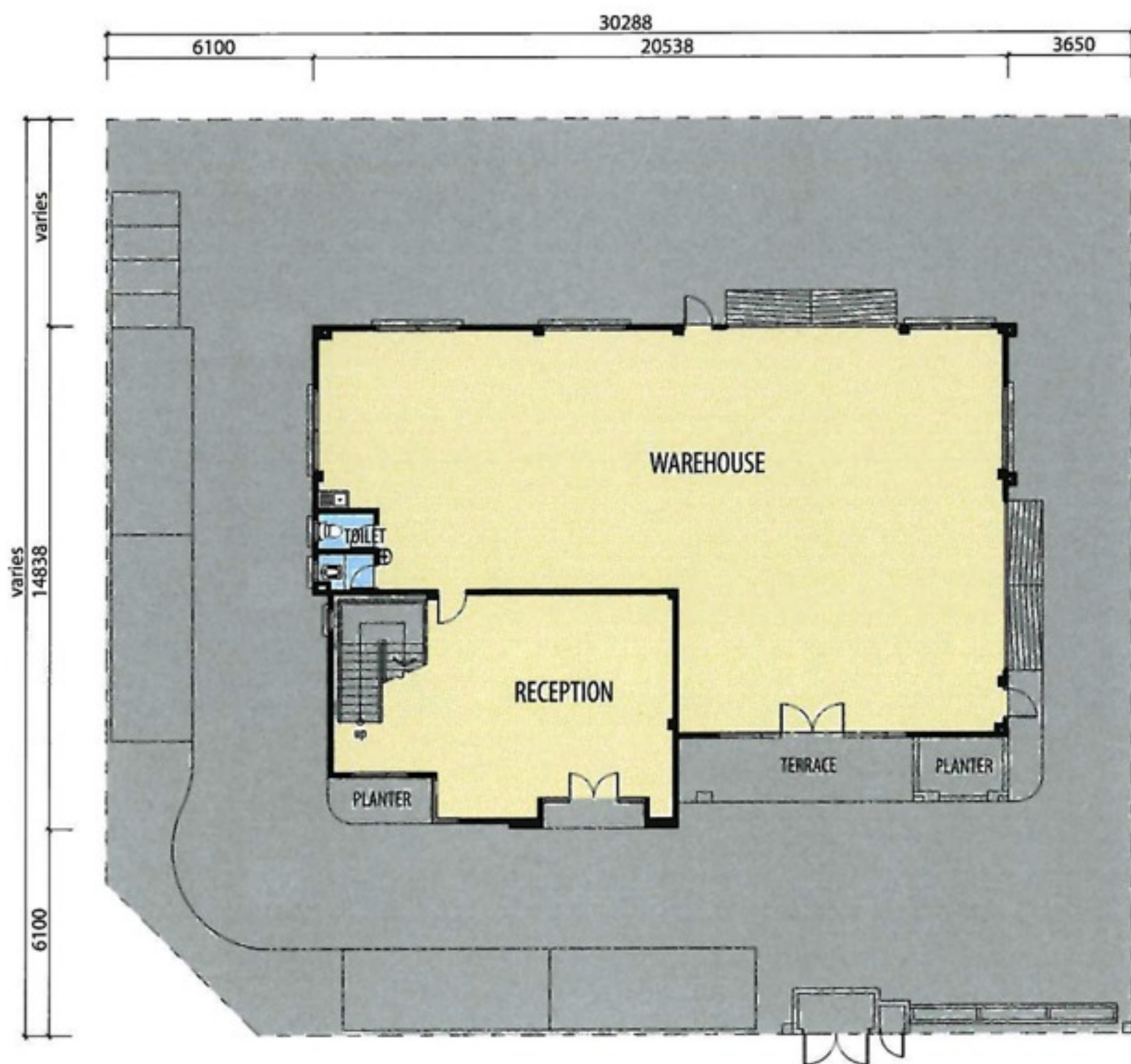




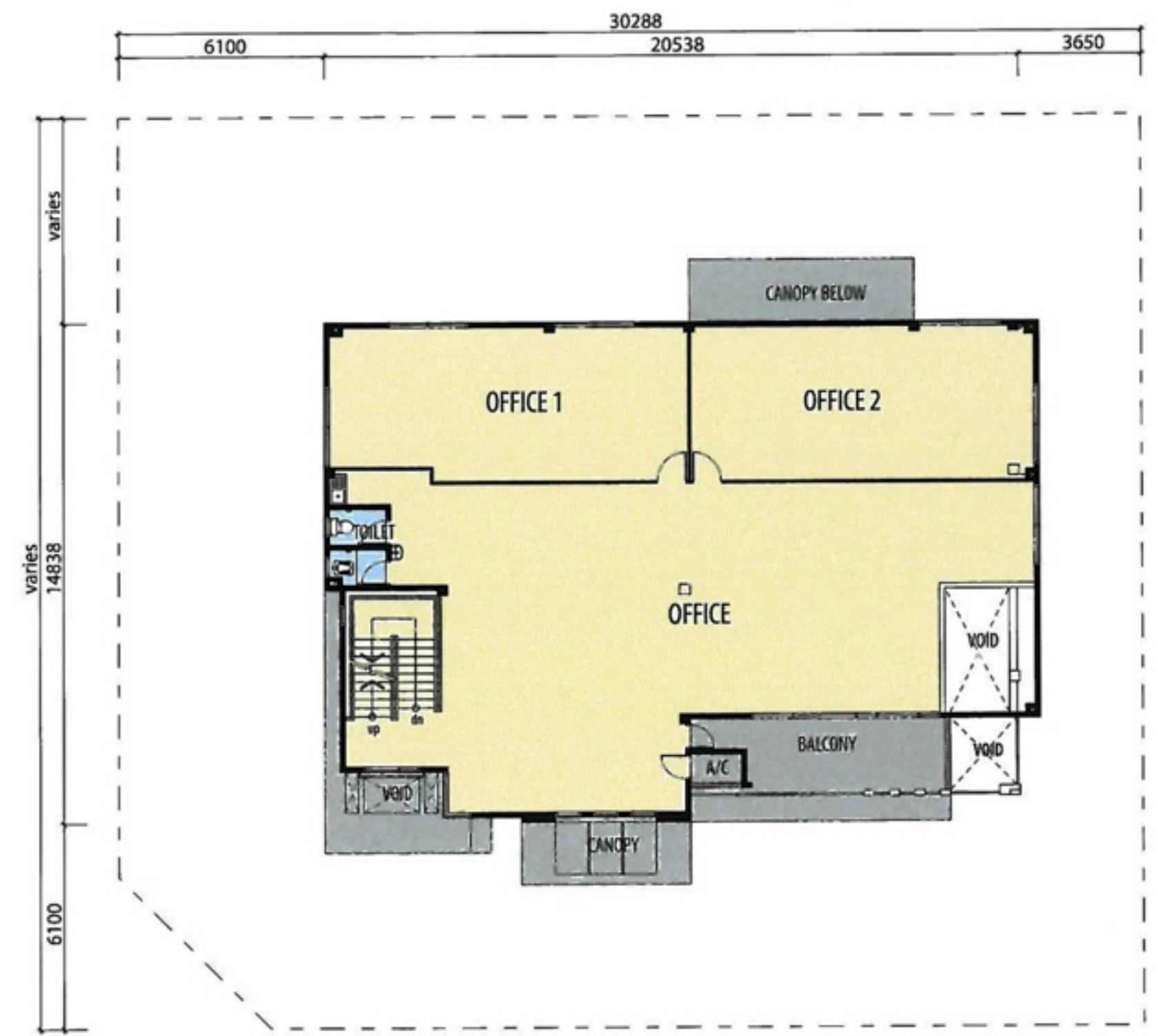
mezzanine floor plan



second floor plan



ground floor plan



first floor plan