

## specifications

STRUCTURE	Generally reinforced concrete frame
WALL	Generally brickwall
CEILING	Generally skim coat to the underside of floor slab Top most floors – asbestos-free ceiling – skim coat to underside of floor slab
WINDOWS	Generally aluminium framed windows
DOORS	
Shop	Front – glass panel and door Rear – roller shutter and plywood flush door (where applicable) Toilet – timber or PVC flush door Store – plywood flush door M.S grille door to staircase MS door to refuse
Office	Entrance Door – fire rated door Toilet – timber or PVC flush door Air condition ledge – plywood flush door
LOCKS	Lockset
WALL FINISHES	Generally acrylic based paint to external wall Emulsion paint to internal wall Toilet – wall tiles to 1500mm high
FLOORING	Generally cement render Toilet – floor tiles

SANITARY INSTALLATION	2 storey	3 storey	4 storey		
Water closet	2 nos	3 nos	4 nos		
Squatting pan	2 nos	3 nos	4 nos		
Wash hand basin	2 nos	3 nos	4 nos		
Sink	1 no	1 no	1 no		
ELECTRICAL INSTALLATION	2 storey (int)	2 storey (corner)	3 storey (int)	3 storey (corner)	4 storey (corner)
Lighting point	11 nos	13 nos	16 nos	18 nos	25 nos
Power point	8 nos	8 nos	12 nos	12 nos	16 nos
Fan point	3 nos	3 nos	3 nos	3 nos	3 nos

The information contained in this brochure is subject to change and cannot form part of an offer or contract. All renderings are artist's impressions only and all measurements are approximate. While every reasonable care has been taken in preparing this brochure, the developer cannot be held responsible for any inaccuracies.

## 2, 3 & 4 Storey Shopoffice 2, 3 及 4 層店舖辦公樓



TYPE  
**C**HAMPION

# 市中心的商業中心

具備互聯網及閉路電視

Another signature development of

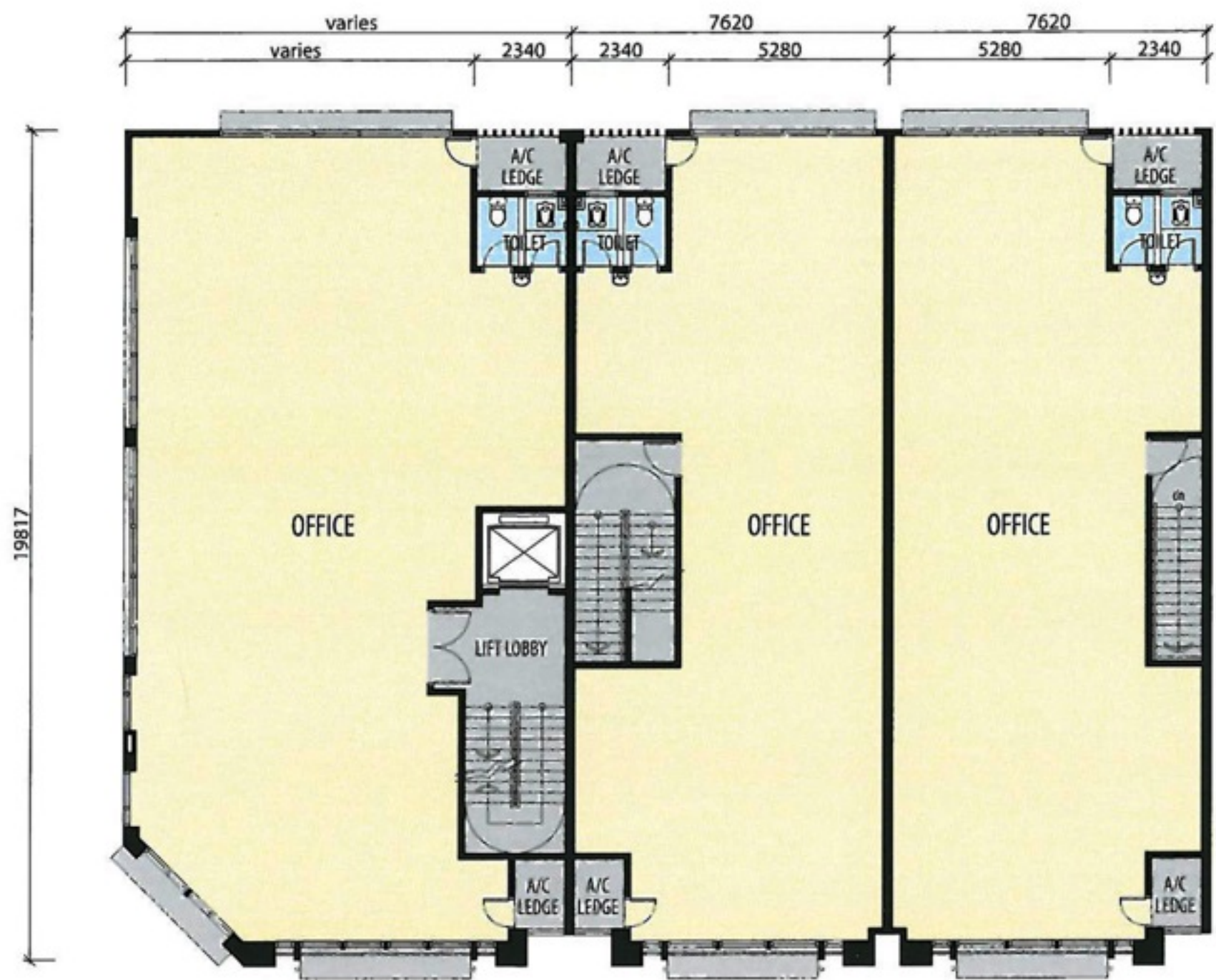


Developer: Purcon Resources Sdn Bhd (387153-X)

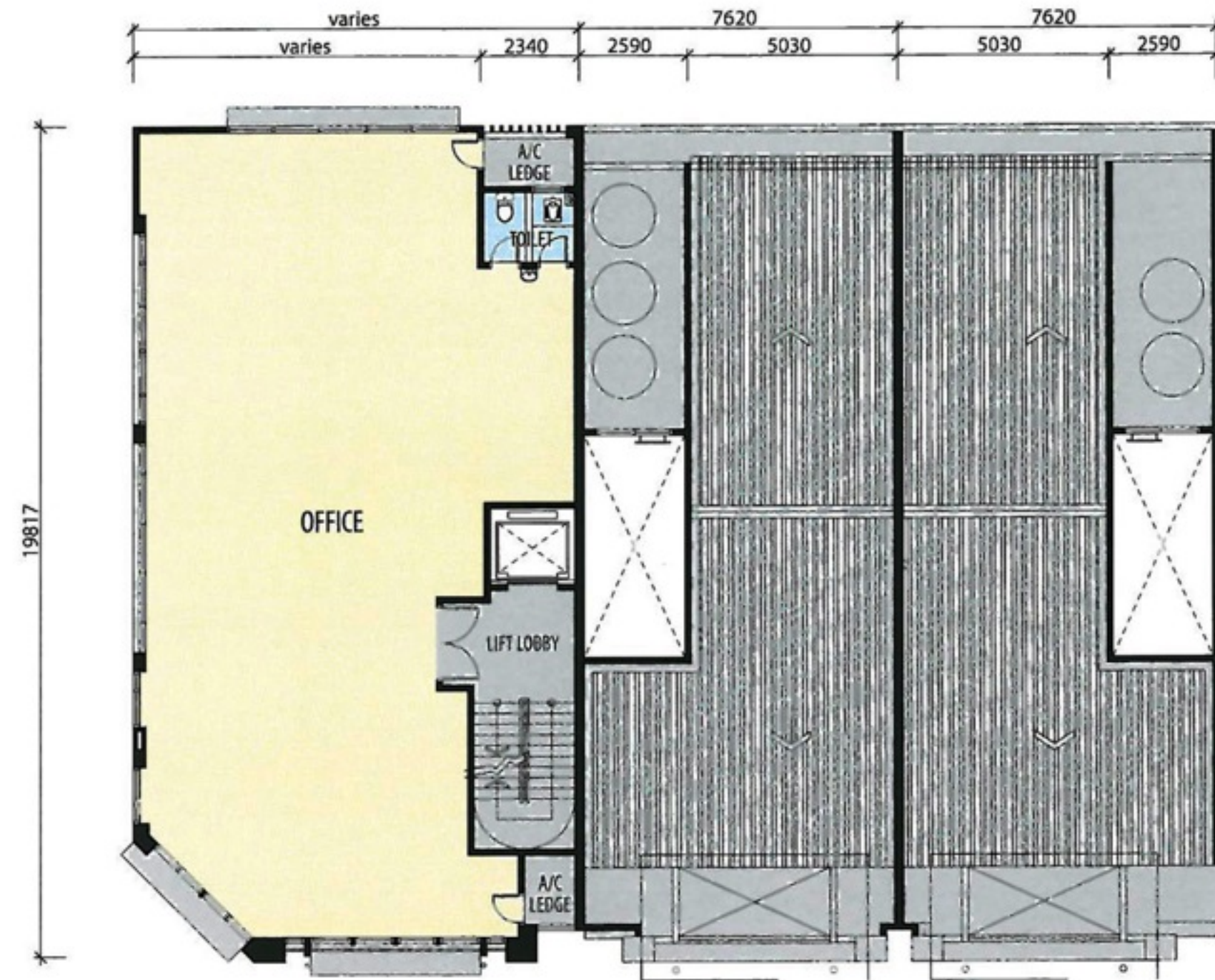
Sales Enquiries: 089-888 911/886 911/882 911/880 911  
012-2950 083/019-8835 969/012-3576 715/017-3978 667

Sales Office: MD1D 0763, Ground Floor, Block C, Ming Huat Light Industries, Dam Road, 91100 Lahad Datu, Sabah. Fax: 089-886 921

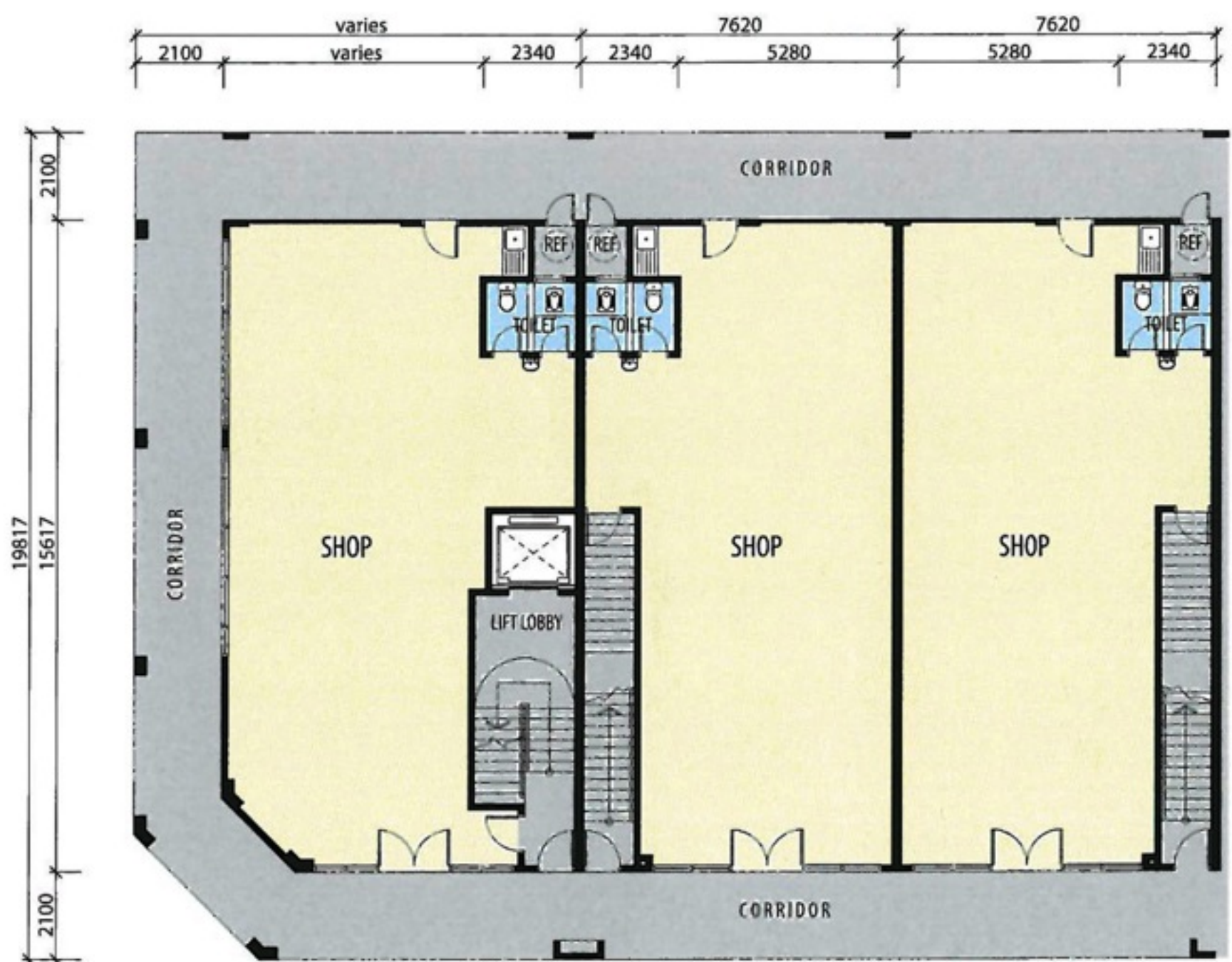
Headquarters: Wisma Purcon B1-03-13, Jalan SR 1/9, Taman Serdang Jaya, Section 9, 43300 Seri Kembangan, Selangor Darul Ehsan.  
Fax: 03-8941 2460/61



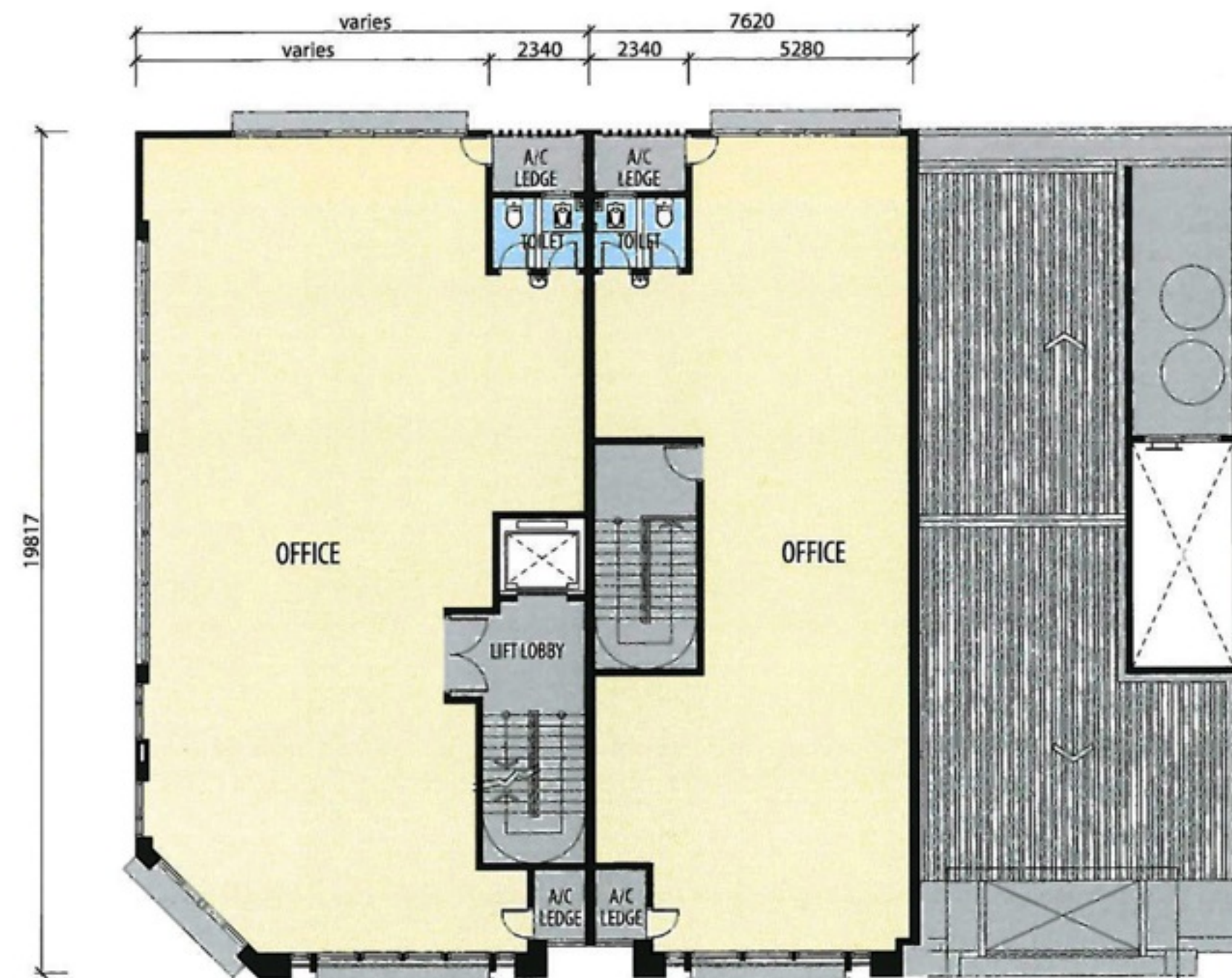
first floor plan



third floor plan



ground floor plan



second floor plan